

# OHIO

## 2009



## Induced Abortions in Ohio

Ohio Department of Health

Ted Strickland, Governor

Alvin D. Jackson, M.D., Director of Health

An equal opportunity employer/provider

# **Induced Abortions in Ohio, 2009**

**Prepared by:**

**Center for Public Health Statistics and Informatics  
Office of Performance Improvement**

**John Paulson  
Supervisor**

**Donna L. Smith  
Researcher**

**October, 2010**

**Induced Abortion Program contact Persons**

**Center for Public Health Statistics and Informatics**

**Data Analysis**

**John Paulson**

**614-644-8507**

**Donna L. Smith**

**614-466-7545**

**Quality Assurance**

**Fetal Development**

**Resources Directory on request**

**Hanh Le**

**614-644-7726**

**Office of General Counsel**

**Legislation**

**Rachel Belenker**

**614-466-4882**

## TABLE OF CONTENTS

	<i>Induced Abortion Summary</i>	<i>1</i>
<b>Figure 1</b>	Resident Induced Abortions Ohio, 1976-2009	3
<b>Figure 2</b>	Selected characteristics of resident induced abortions in Ohio, 2009	5
<b>Figure 3</b>	Induced abortions reported in Ohio, by county of occurrence, 2009	7
<b>Figure 4</b>	Abortion ratio and abortion rate, by year, Ohio residents 1990-2009	9
<b>Figure 5</b>	Induced abortion rates per 1,000 women by age, Ohio residents, 2003-2009	11
<b>Figure 6</b>	Induced abortion ratio, by age group, Ohio residents, 2003 - 2009	13
<b>Figure 7</b>	Total Induced abortions by weeks of gestation, by year, 1990-2009	15
<b>Table 1</b>	Induced Abortion Summary Tables, Ohio, 2009	17
<b>Table 2</b>	Selected characteristics of induced abortions reported in Ohio, 1997-2009	18
<b>Table 3</b>	Resident induced abortions reported in Ohio, by county of residence, 1997-2009	20
<b>Table 4</b>	Resident induced abortions reported in Ohio, by county of residence and age, 2009	22
<b>Table 5a</b>	Resident induced abortions reported in Ohio, by selected counties, race, and broad age groups, 2009	24
<b>Table 5b</b>	Resident induced abortions reported in Ohio, by selected counties, race and age, 2009	28
<b>Table 6</b>	Induced abortions reported in Ohio, by county of occurrence, 1997-2009	30

---

<b>Table 7</b>	Induced abortions reported in Ohio, by method of termination and county of occurrence, 2009	31
<b>Table 8</b>	Total induced abortions reported in Ohio, by gestational age, 2009	32
<b>Table 9</b>	Resident induced abortions reported in Ohio, by age of women obtaining abortion and by number of prior induced abortions, 2009	33
<b>Table 10a</b>	Total induced abortions in Ohio with post abortion complications, by type of complication, 2009 (Data Source is ‘Confidential Abortion Reporting Form’)	34
<b>Table 10b</b>	Total induced abortions in Ohio with post abortion complications, by type of complication, 2009 (Data Source is ‘Post-Abortion Care Report for Complications’)	35
<b>Table 11</b>	Total induced abortions in Ohio with post-abortion complications, by type of complication and gestation period, 2009 (Data Source is Post-Abortion Care Report for Complications)	36
<b>Table 12</b>	Resident Induced Abortions by Zip Code of Patient, Ohio, 2009	37
<b>Appendix I</b>	Confidential Abortion Report form	44
<b>Appendix II</b>	Post-Abortion Care Report for Complications form	46

---

## **Induced Abortion Summary**

### **Background**

Induced abortions must be reported to the Ohio Department of Health by the physician who performed the abortion, using the form “Confidential Abortion Reports.” The report includes demographic and medical history information about the woman obtaining the abortion and information about the medical procedure. These reports are used to produce statistical reports about abortions occurring in Ohio. The forms are confidential: no identifying information about women who obtain abortions is collected except the medical record number. Physicians providing post abortion care for complications are required to file a “Post Abortion Care Report for Complications.” It is not possible to link these post-abortion reports to the “Confidential Abortion Reports.” Both types of reports contain information about complications and are used to create statistical reports about post-abortion complications. This report presents information derived from both “Confidential Abortion Reports” and “Post-Abortion Care Reports for Complications” for 2009 in Ohio (reporting forms are included as Appendices I and II).

### **Characteristics of Induced Abortions Reported in Ohio, 2009**

Induced abortion statistics are available for Ohio dating back to 1976. In 1994 the reporting form was improved. Many trend comparisons in this summary date back to 1996. We also compare the 2008 abortions to 2009 occurrences to show more recent trend developments.

A total of 28,721 induced pregnancy terminations were reported in Ohio for 2009, including 26,959 for Ohio residents (93.9%). The number of total abortions performed in Ohio has seen a decline annually since 2000. (Figure 1)

Approximately one seventh of women who obtained abortions were under 20 years of age, with another third between the ages of 20-24 years of age (figure 2). The age distribution of women obtaining abortions has remained fairly unchanged since 1994. Approximately 83% of women who obtained an abortion were unmarried. The marital status distribution has remained constant since 1994. Fifty-five percent of resident women who obtained abortions were White, 37% were African American, and 8% were other races or unknown. Three and one half percent of abortions were obtained by women of Hispanic origin.

The 2009 Ohio abortion rate was 12 per 1,000 women ages 15-44 years (figure 4). The most recent comparable rate for the US was higher at 16 per 1,000 women (year 2006). The 2009 Ohio abortion ratio was 181 abortions per 1,000 live births, a ratio that is also lower than the 2006 US abortion ratio of 236 abortions per 1,000 live births.

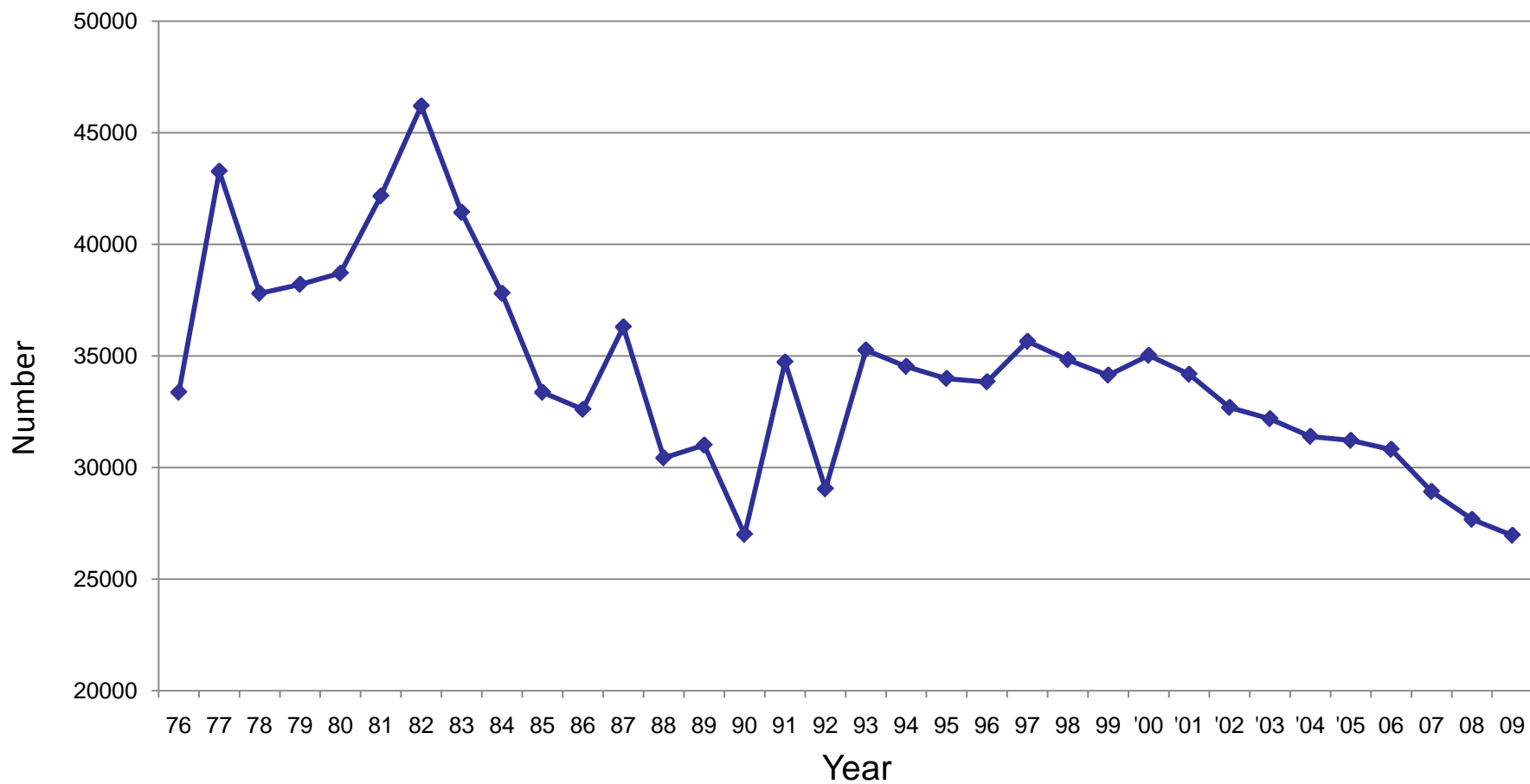
In 2009, approximately 34% of women obtaining abortions in Ohio reported no prior pregnancies. Over half of all induced abortions involved pregnancies of less than 9 weeks (57%), with approximately 28% involving pregnancies of 9-12 weeks (figure 2). The proportion involving abortions of less than 9 weeks increased from 42% in 1995, while the proportion between 9 and 12 weeks declined from 40% to 28% (figure 7). There were 613 abortions involving pregnancies of 20 or more weeks, a number that decreased from 712 in 1995. All reported abortions were obtained in eight major metropolitan areas of Ohio

There were changes between 2002 and 2009 in method of termination for induced abortions performed in Ohio. Curettage remained the most frequent method of termination at 69% in 2009. That method has decreased since 2001, when 87% of terminations were by curettage. Medical/non-surgical procedures are the second most common method (20%). Dilation and evacuation was the third most common method (9%).

Specific details about medical/non-surgical procedures have not been keyed from Ohio abortion reports, which makes it difficult to tabulate the specific procedures used in Ohio. We did, however, examine a sample of these reports in 2005 and the majority of these medical/surgical procedures were methotrexate and misoprostol administration. The medical procedures used most commonly in early abortions nationally are methotrexate with misoprostol and mifepristone with misoprostol (Goldberg AM, Greenberg MB, Darney PD. Drug therapy: miosprostol and pregnancy. N Engl J Med 2001;344:38-47). The FDA approved mifepristone for medical abortions in 2000. That approval was expected to shift many of the early abortions from surgical to non-surgical methods.

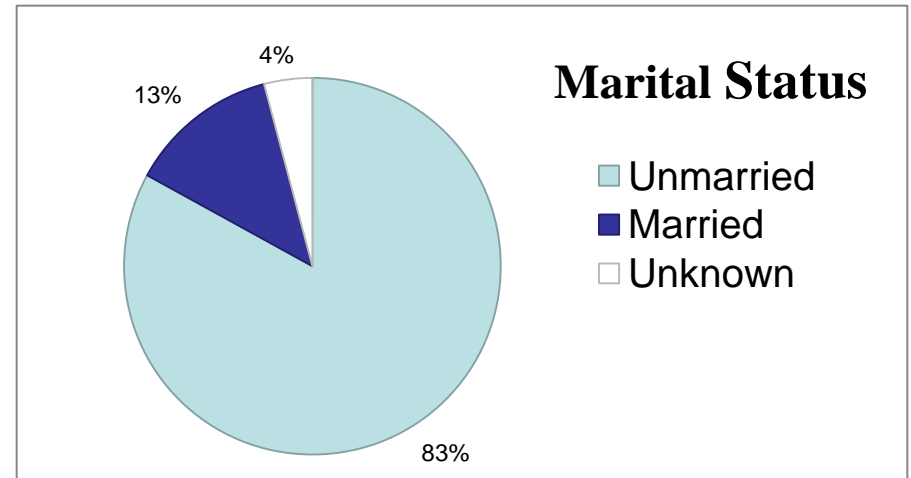
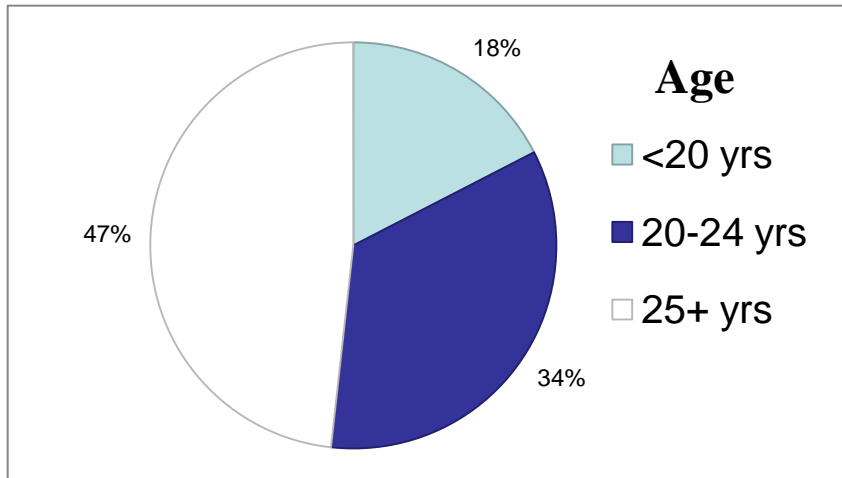
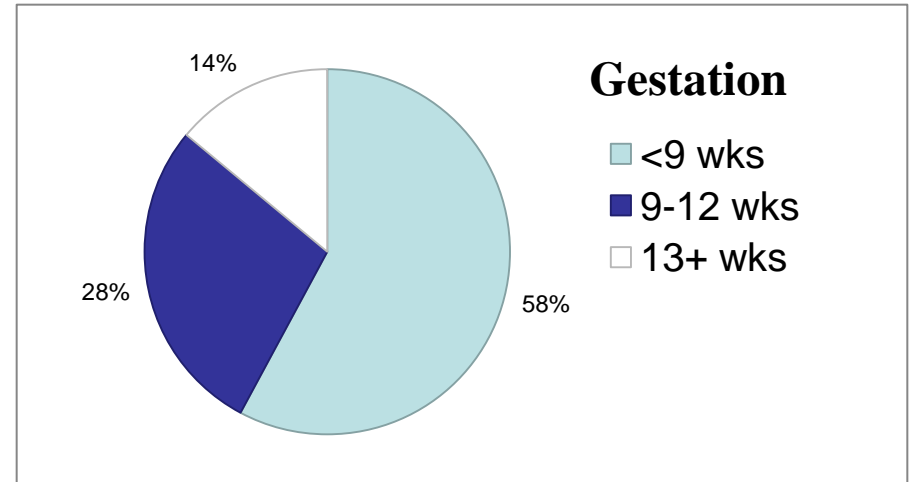
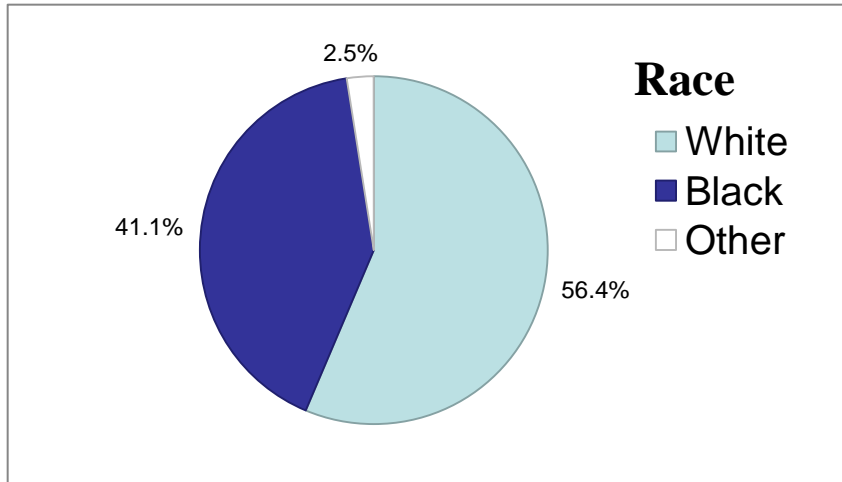
County of residence for women obtaining abortions is reported in tables 3, 4, 5a, and 5b. In accordance with Ohio Department of Health disclosure limitation policies, some counties were removed from tables 5a and 5b. The removed counties had fewer than 25 female residents in the reported age/race categories.

# Figure 1. Resident induced abortions, Ohio, 1976 – 2009



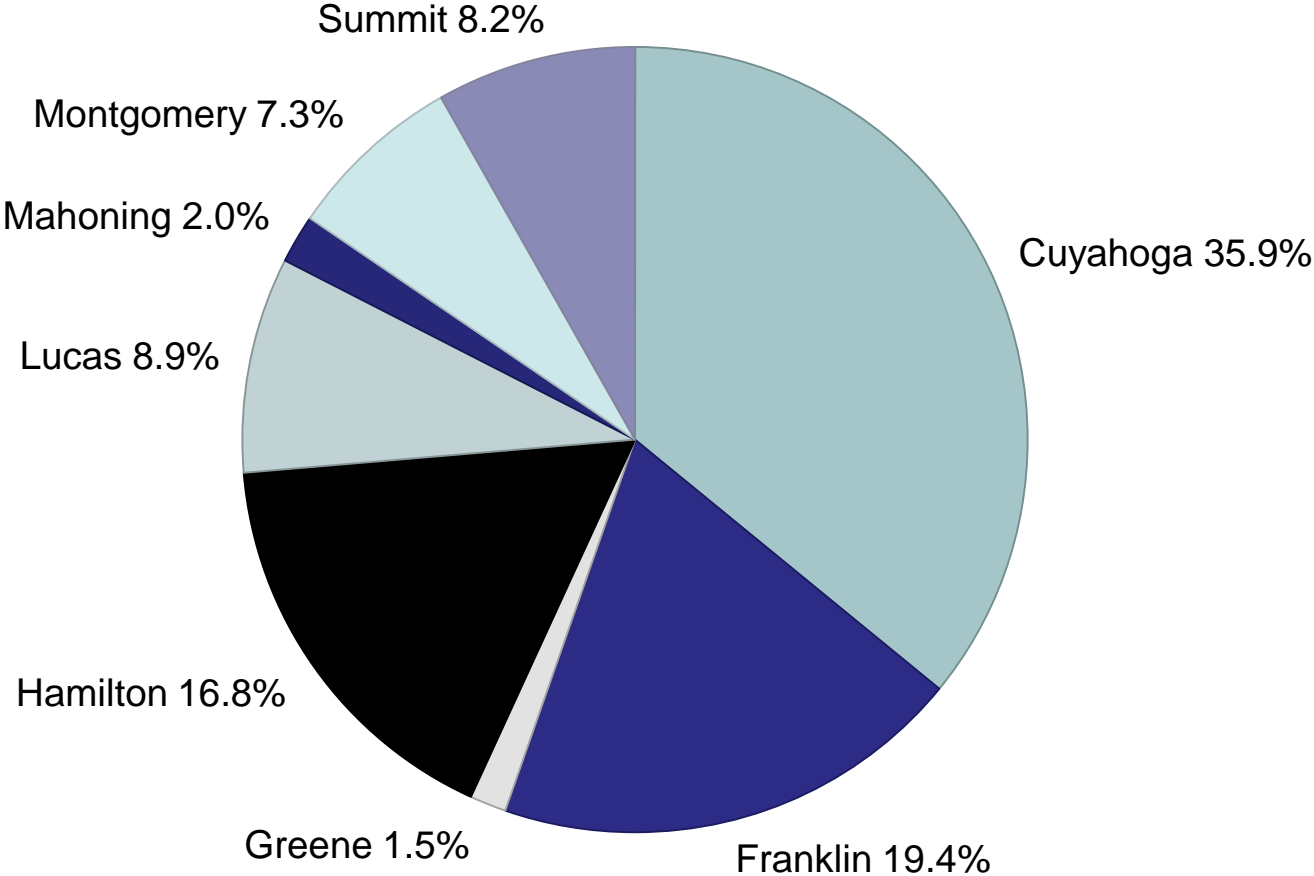


# Figure 2. Selected characteristics of resident induced abortions in Ohio, 2009

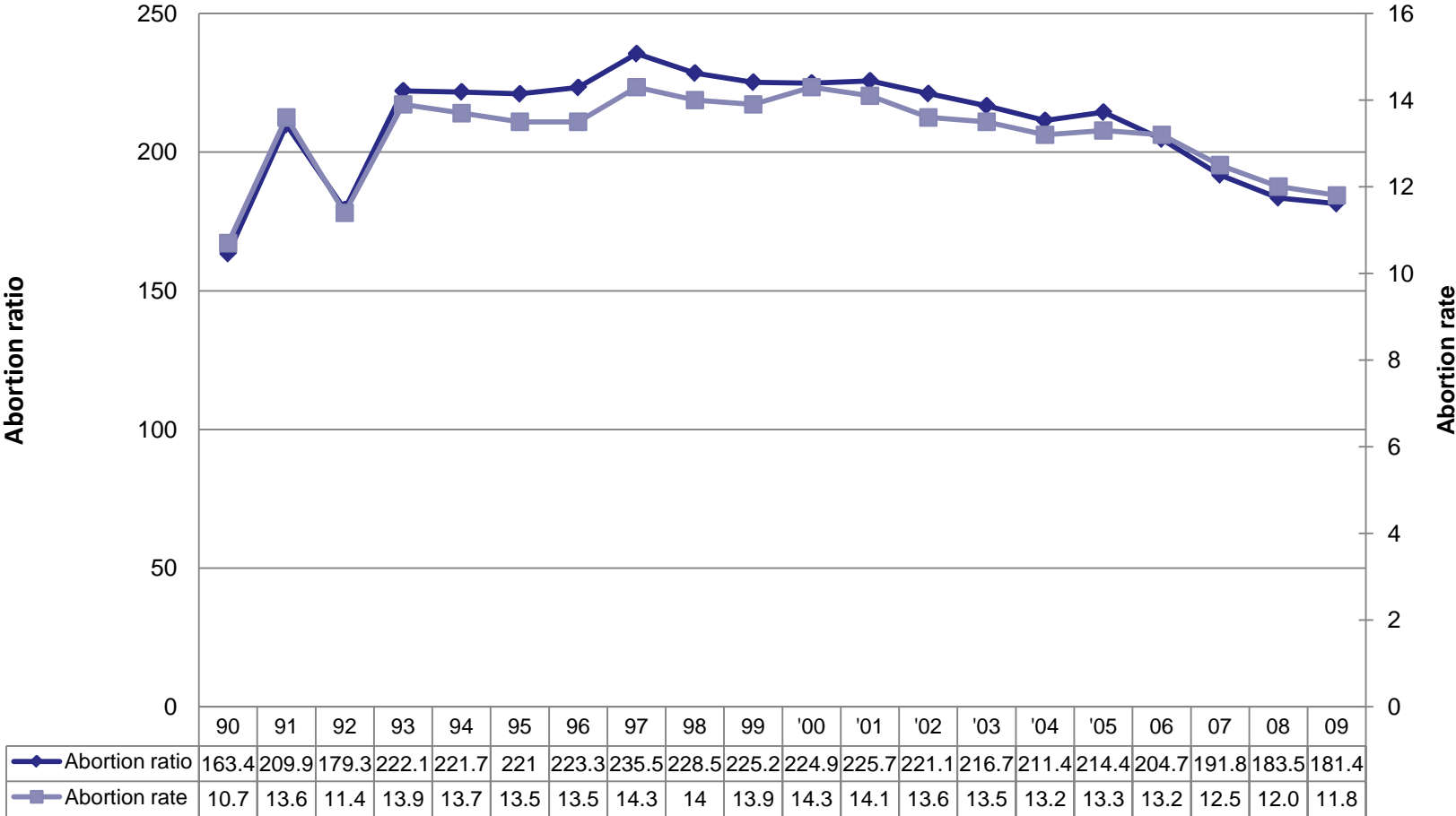


Excludes Unknown unless otherwise stated

**Figure 3. Induced abortions reported in Ohio, by county of occurrence, 2009**

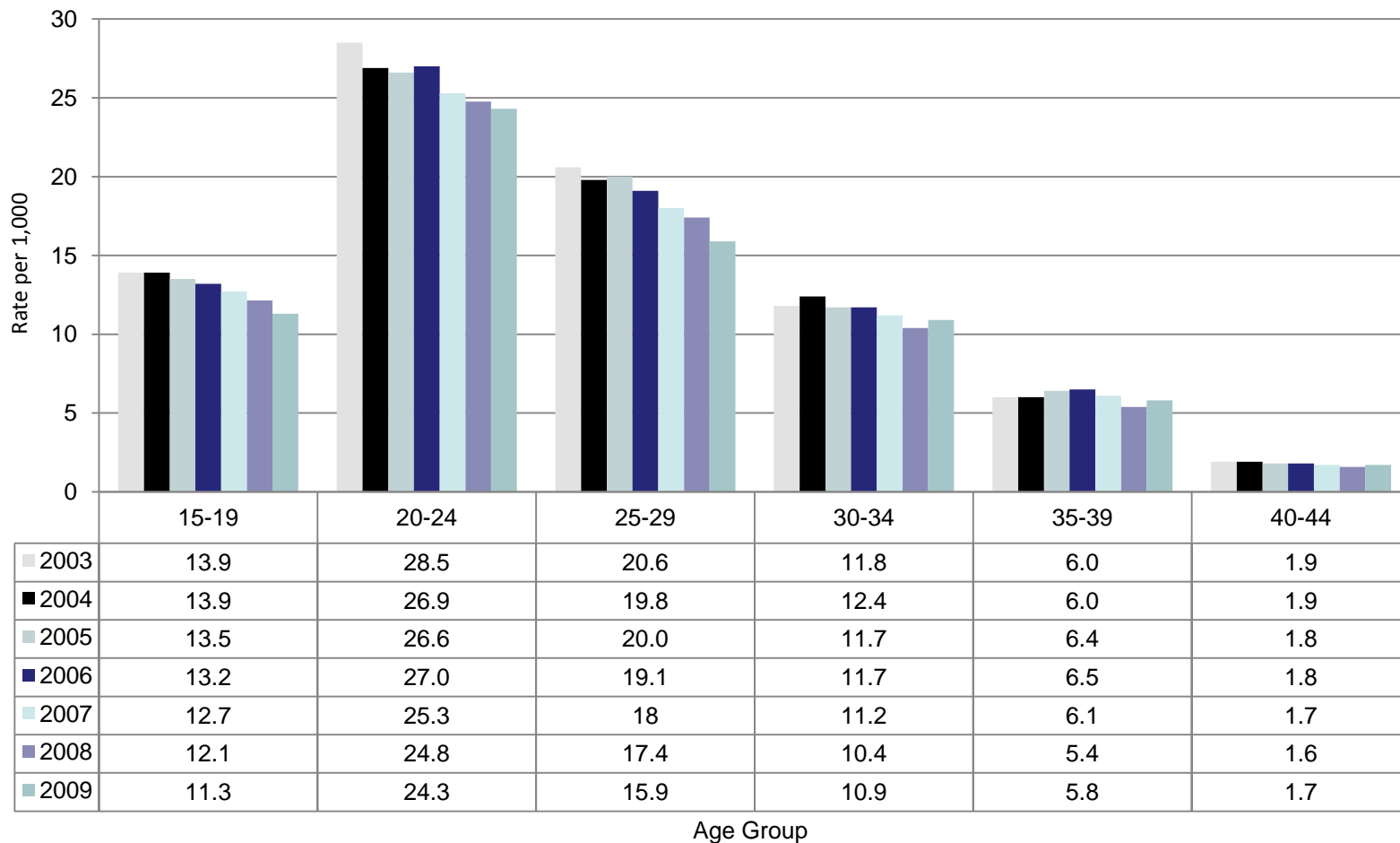


# Figure 4. Abortion ratio and abortion rate, by year, Ohio residents, 1990 - 2009



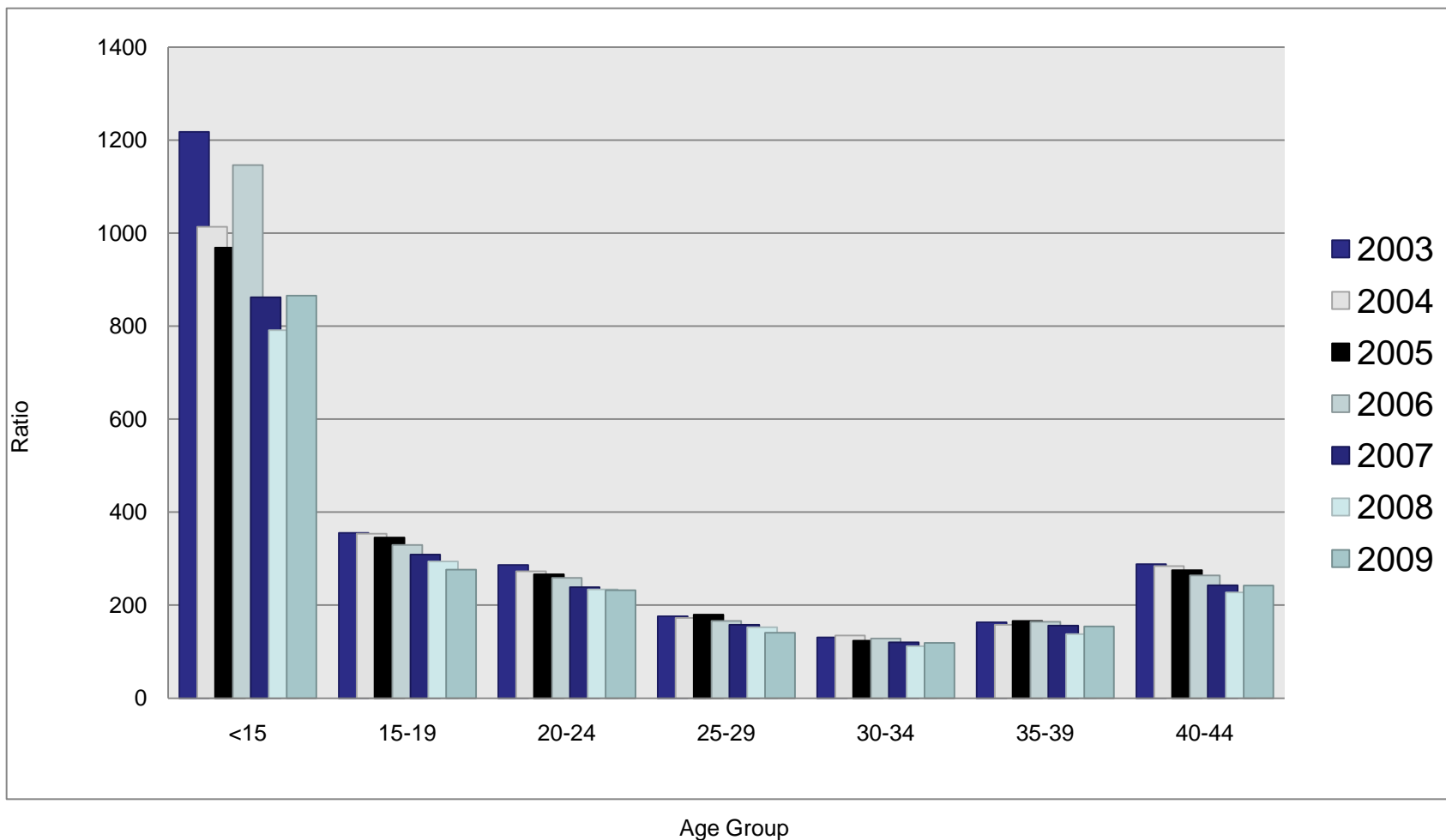
Abortion ratio is number of abortions per 1,000 live births.  
 Abortion rate is number of abortions per 1,000 women ages 15-44.

# Figure 5. Induced abortion rates per 1,000 women by age, Ohio residents, 2003 - 2009



Abortion rate is number of abortions per 1,000 female population in specified age group.

# Figure 6. Induced abortion ratio, by age group, Ohio residents, 2003 - 2009



Abortion ratio is number of abortions per 1,000 live births in specified age group

# Figure 7. Total Induced abortions by weeks of gestation, by year, 1990-2009

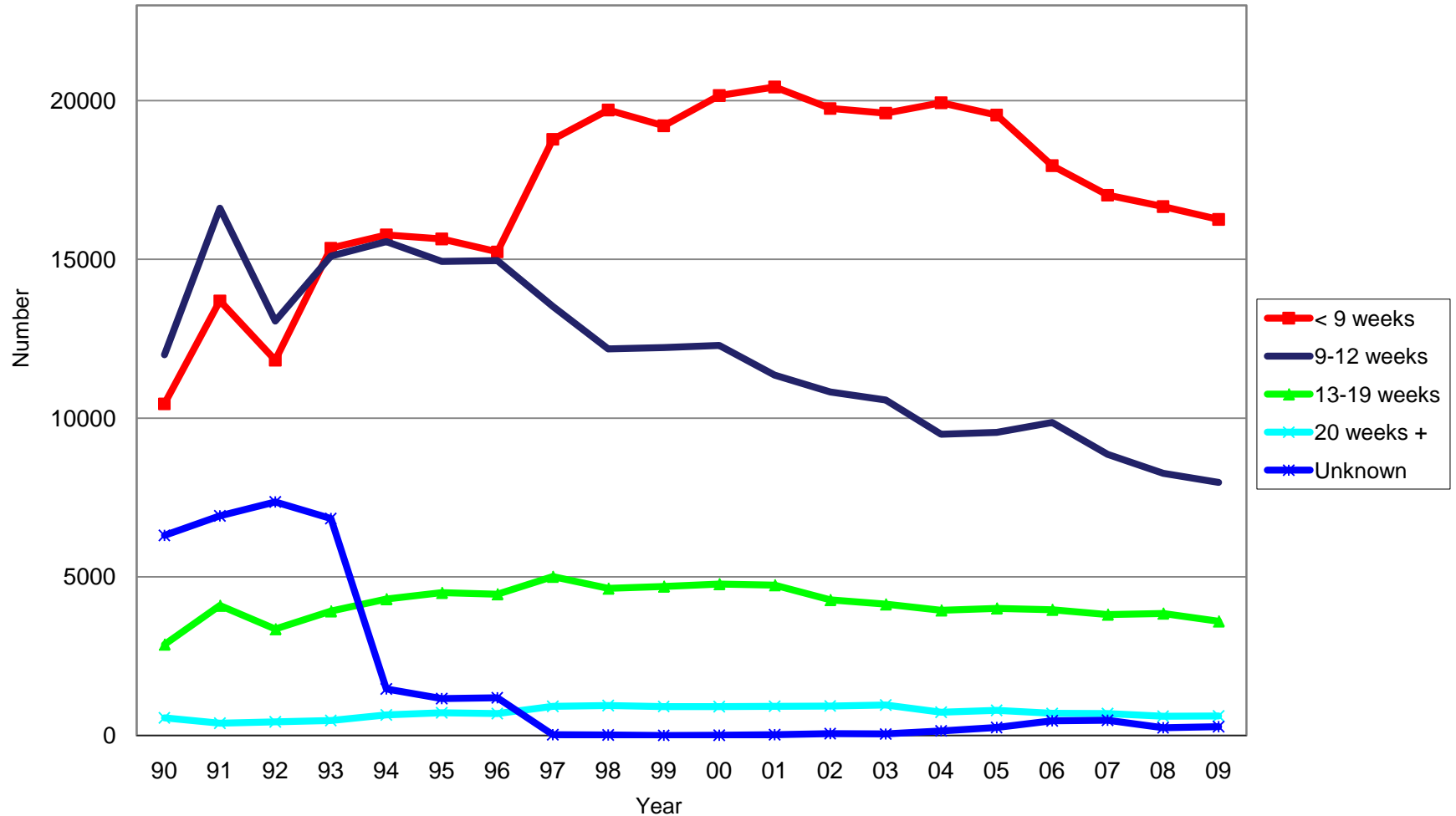


TABLE 1

## INDUCED ABORTION SUMMARY TABLE, OHIO, 2009

CHARACTERISTICS	NUMBER	PERCENT
TOTAL INDUCED ABORTIONS	28721	100.0
RESIDENCE:		
Ohio Resident	26959	93.9
Out-of-State Resident	1762	6.1
AGE:		
Under 20 Years	4933	17.2
20-24 Years	9739	33.9
25 Years and Over	13723	47.8
Age Not Reported	326	1.1
RACE GROUP:		
White	15683	54.6
Black	10647	37.1
American Indian	69	0.2
Asian/Pacific Islander	610	2.1
Other/Unknown	1712	6.0
HISPANIC:		
Non-Hispanic	27321	95.1
Hispanic	1041	3.6
Unknown	359	1.2
LEVEL OF EDUCATION:		
Less than Grade 9	533	1.9
Grade 9-12	17830	62.1
1-2 Yrs College	4977	17.3
3-4 Yrs College	3979	13.9
5+ Yrs College	717	2.5
Unknown	685	2.4
MARITAL STATUS:		
Married <u>1/</u>	4552	13.1
Unmarried <u>2/</u>	23779	82.8
Not Reported	1171	4.1
NUMBER OF LIVING CHILDREN:		
None	9890	34.4
One	7932	27.6
Two or More	9888	34.4
Not Reported	1011	3.5
WEEKS OF GESTATION:		
Less than 9 Weeks	16264	56.6
9-12 Weeks	7971	27.8
13 Weeks and Over	4210	14.7
Not Reported	276	1.0

1/ Includes Separated2/ Includes Never Married, Divorced, Widowed

TABLE 2

## SELECTED CHARACTERISTICS OF INDUCED ABORTIONS REPORTED IN OHIO, 1997-2009

Characteristic	2009	2008	2007	2006	2005	2004	2003	2002	2001	2000	1999	1998	1997
<u>NUMBER OF ABORTIONS</u>													
TOTAL INDUCED ABORTIONS	28721	29613	30859	32936	34128	34242	35319	35830	37464	38140	37041	37479	38242
<b>RESIDENCE:</b>													
Ohio Resident	26959	27672	28921	30809	31210	31391	32180	32687	34174	35022	34134	34829	35650
Out-of-State Resident	1762	1941	1938	2127	2918	2851	3139	3143	3290	3118	2907	2606	2509
Unknown	0	0	0	0	0	0	0	0	0	0	0	44	83
<b>AGE:</b>													
Under 15 Years	190	188	207	292	240	253	292	277	286	314	279	334	354
15-19 Years	4743	5144	5376	5603	5817	5911	6014	6098	6485	6860	6997	7395	7795
20-24 Years	9739	9945	10182	11123	11502	11772	12441	12370	12710	13029	12391	12447	12682
25-29 Years	6547	7192	7355	7720	7968	7655	7836	7984	8531	8885	8774	8973	8951
30-34 Years	4021	3835	4081	4333	4687	4875	4980	5205	5299	5073	4797	4528	4689
35-39 Years	2389	2245	2535	2741	2708	2589	2660	2775	2956	2957	2857	2859	2859
40-44 Years	716	723	755	845	874	910	938	906	1064	948	883	876	833
45 Years & Older	50	53	53	53	73	68	55	61	114	53	37	42	35
Unknown	326	288	315	226	259	209	103	154	19	21	26	25	44
<b>EDUCATION:</b>													
Less than Grade 9	533	479	579	662	653	675	756	755	797	612	493	632	644
Grade 9-12	17830	18389	18880	20515	20911	21222	22359	22742	23834	24281	23287	23911	24547
1 Or More College Years	8956	10105	10719	11064	11810	11763	11924	11893	12593	12823	11919	11860	12495
None/Not Reported	685	640	681	695	754	582	280	440	240	424	1342	1076	556
<b>RACE:</b>													
White	15683	16019	17221	18724	19673	19952	20717	20934	22045	22581	22143	22366	22894
Black	10647	11064	11073	11683	12070	12028	12463	12689	13160	13480	12680	12155	12377
Asian/Pacific Islander	610	600	693	695	723	731	731	740	775	782	720	661	718
Other/Unknown/Not Reported	1781	1930	1872	1834	1662	1531	1418	1467	1484	1297	1498	2297	2253
<b>MARITAL STATUS:</b>													
Never Married	22078	22630	23157	24571	25595	25489	26263	26140	27276	27460	25944	25997	26720
Married	2990	3172	3621	3936	4199	4366	4737	4720	5058	5245	4928	4904	5082
Separated	781	749	881	990	1080	1146	1148	1215	1381	1374	1334	1317	1331
Divorced	1630	1712	1826	2174	2296	2462	2663	2892	3104	3300	3350	3502	3624
Widowed	71	66	88	72	72	88	89	100	110	126	101	114	116
Unknown	1171	1284	1286	1193	886	691	419	763	535	635	1384	1645	1369
<b>NUMBER OF LIVING CHILDREN:</b>													
No Children	9890	10211	10974	11488	9415	9007	9913	10154	10866	11103	11480	11861	13884
One Child	7932	8210	8499	9040	9505	9535	9805	9970	10719	11006	10650	10726	10774
Two or more Children	9888	10093	10233	10899	11263	11515	11800	12179	12638	12679	12030	11546	11417
Unknown	1011	1099	1153	1519	3945	4185	3801	3527	3241	3352	2881	3346	2167
<b>WEEKS OF GESTATION:</b>													
Less than 9 Weeks	16264	16663	17023	17955	19549	19933	19610	19755	20432	20161	19212	19708	18784
9 - 12 Weeks	7971	8257	8855	9862	9547	9489	10570	10820	11350	12293	12221	12183	13516
13 - 19 Weeks	3597	3845	3811	3963	4006	3944	4133	4271	4738	4772	4695	4631	5004
20 Weeks and Over	613	603	690	694	793	731	961	929	921	906	912	944	915
Unknown	276	245	480	462	253	145	45	55	23	8	1	13	23



Table 2. Induced Abortions, 1997-2009 (page 2)

Characteristic	2009	2008	2007	2006	2005	2004	2003	2002	2001	2000	1999	1998	1997
<u>PERCENTAGE DISTRIBUTION</u>													
TOTAL INDUCED ABORTIONS	100.0	100.0	100.0	100.0	100.0	100.0	100.0	100.0	100.0	100.0	100.0	100.0	100.0
RESIDENCE:													
Ohio Resident	93.9	93.4	93.7	93.5	91.4	91.7	91.1	91.2	91.2	91.8	92.2	92.9	93.2
Out-of-State Resident	6.1	6.6	6.3	6.5	8.6	8.3	8.9	8.8	8.8	8.2	7.8	7.0	6.6
Unknown	0.0	0.0	0.0	0.0	0.0	0.0	0.0	0.0	0.0	0.0	0.0	0.1	0.2
AGE:													
Under 15 Years	0.7	0.6	0.7	0.9	0.7	0.7	0.8	0.8	0.8	0.8	0.8	0.9	0.9
15-19 Years	16.5	17.4	17.4	17.0	17.0	17.3	17.0	17.0	17.3	18.0	18.9	19.7	20.4
20-24 Years	33.9	33.6	33.0	33.8	33.7	34.4	35.2	34.5	33.9	34.2	33.5	33.2	33.2
25-29 Years	22.8	24.3	23.8	23.4	23.3	22.4	22.2	22.3	22.8	23.3	23.7	23.9	23.4
30-34 Years	14.0	13.0	13.2	13.2	13.7	14.2	14.1	14.5	14.1	13.3	13.0	12.1	12.3
35-39 Years	8.3	7.6	8.2	8.3	7.9	7.6	7.5	7.7	7.9	7.8	7.7	7.6	7.5
40-44 Years	2.5	2.4	2.4	2.6	2.6	2.7	2.7	2.5	2.8	2.5	2.4	2.3	2.2
45 Years & Older	0.2	0.2	0.2	0.2	0.2	0.2	0.2	0.2	0.3	0.1	0.1	0.1	0.1
Unknown	1.1	1.0	1.0	0.7	0.8	0.6	0.3	0.4	0.1	0.1	0.1	0.1	0.1
EDUCATION:													
Less than Grade 9	1.9	1.6	1.9	2.0	1.9	2.0	2.1	2.1	2.1	1.6	1.3	1.7	1.7
Grade 9-12	62.1	62.1	61.2	62.3	61.3	62.0	63.3	63.5	63.6	63.7	62.9	63.8	64.2
1 Or More College Years	31.2	34.1	34.7	33.6	34.6	34.4	33.8	33.2	33.6	33.6	32.2	31.6	32.7
None/Not Reported	2.4	2.2	2.2	2.1	2.2	1.7	0.8	1.2	0.6	1.1	3.6	2.9	1.5
RACE:													
White	54.6	54.1	55.8	56.8	57.6	58.3	58.7	58.4	58.8	59.2	59.8	59.7	59.9
Black	37.1	37.4	35.9	35.5	35.4	35.1	35.3	35.4	35.1	35.3	34.2	32.4	32.4
Asian/Pacific Islander	2.1	2.0	2.2	2.1	2.1	2.1	2.1	2.1	2.1	2.1	1.9	1.8	1.9
Other/Unknown/Not Reported	6.2	6.5	6.1	5.6	4.9	4.5	4.0	4.1	4.0	3.4	4.0	6.1	5.9
MARITAL STATUS:													
Never Married	76.9	76.4	75.0	74.6	75.0	74.4	74.4	73.0	72.8	72.0	70.0	69.4	69.9
Married	10.4	10.7	11.7	12.0	12.3	12.8	13.4	13.2	13.5	13.8	13.3	13.1	13.3
Separated	2.7	2.5	2.9	3.0	3.2	3.3	3.3	3.4	3.7	3.6	3.6	3.5	3.5
Divorced	5.7	5.8	5.9	6.6	6.7	7.2	7.5	8.1	8.3	8.7	9.0	9.3	9.5
Widowed	0.2	0.2	0.3	0.2	0.2	0.3	0.3	0.3	0.3	0.3	0.3	0.3	0.3
Unknown	4.1	4.3	4.2	3.6	2.6	2.0	1.2	2.1	1.4	1.7	3.7	4.4	3.6
NUMBER OF LIVING CHILDREN:													
No Children	34.4	34.5	35.6	34.9	27.6	26.3	28.1	28.3	29.0	29.1	31.0	31.6	36.3
One Child	27.6	27.7	27.5	27.4	27.9	27.8	27.8	27.8	28.6	28.9	28.8	28.6	28.2
Two or more Children	34.4	34.1	33.2	33.1	33.0	33.6	33.4	34.0	33.7	33.2	32.5	30.8	29.9
Unknown	3.5	3.7	3.7	4.6	11.6	12.2	10.8	9.8	8.7	8.8	7.8	8.9	5.7
WEEKS OF GESTATION:													
Less than 9 Weeks	56.6	56.3	55.2	54.5	57.3	58.2	55.5	55.1	54.5	52.9	51.9	52.6	49.1
9 - 12 Weeks	27.8	27.9	28.7	29.9	28.0	27.7	29.9	30.2	30.3	32.2	33.0	32.5	35.3
13 - 19 Weeks	12.5	13.0	12.3	12.0	11.7	11.5	11.7	11.9	12.6	12.5	12.7	12.4	13.1
20 Weeks and Over	2.1	2.0	2.2	2.1	2.3	2.1	2.7	2.6	2.5	2.4	2.5	2.5	2.4
Unknown	1.0	0.8	1.6	1.4	0.7	0.4	0.1	0.2	0.1	0.0	0.0	0.0	0.1

TABLE 3

## RESIDENT INDUCED ABORTIONS REPORTED IN OHIO, BY COUNTY OF RESIDENCE, 1997-2009

Residence	2009	2008	2007	2006	2005	2004	2003	2002	2001	2000	1999	1998	1997
OHIO	26955	27672	28921	30809	31210	31391	32180	32687	34174	35022	34134	34829	35650
ADAMS	20	16	14	28	22	15	18	15	16	22	24	28	36
ALLEN	173	129	121	153	206	190	159	166	153	165	176	184	207
ASHLAND	53	45	52	48	61	57	64	47	67	69	74	70	57
ASHTABULA	200	149	185	208	187	216	214	228	228	222	195	233	264
ATHENS	112	101	112	100	111	123	121	119	113	131	163	149	196
AUGLAIZE	28	36	32	42	34	37	47	39	47	54	51	52	61
BELMONT	13	12	27	28	40	29	30	24	25	41	26	38	39
BROWN	36	42	48	41	55	44	46	67	63	71	75	71	71
BUTLER	707	754	720	775	816	843	771	773	796	769	854	859	901
CARROLL	34	32	35	25	23	34	32	35	38	40	36	35	33
CHAMPAIGN	45	49	48	57	55	63	52	45	58	74	61	72	70
CLARK	198	245	219	263	282	279	331	300	342	357	319	346	349
CLERMONT	293	321	289	293	317	326	326	344	385	395	429	405	408
CLINTON	63	62	48	46	49	45	60	74	76	74	75	62	65
COLUMBIANA	124	125	157	135	188	179	162	220	202	189	178	172	179
COSHOCTON	31	20	35	28	37	32	43	35	26	34	36	42	31
CRAWFORD	46	41	33	42	48	55	45	58	58	74	70	78	66
CUYAHOGA	6794	7056	6986	7252	7412	7565	7889	8466	8644	8906	8790	8717	8732
DARKE	28	36	44	48	32	47	47	61	45	44	54	51	67
DEFIANCE	38	28	26	48	23	37	37	37	35	43	32	69	45
DELAWARE	140	135	174	188	207	171	169	142	130	178	117	149	149
ERIE	157	139	160	147	209	170	183	209	227	220	216	201	213
FAIRFIELD	157	155	205	184	208	204	184	185	179	184	193	186	194
FAYETTE	32	29	32	33	48	41	43	27	49	44	36	45	46
FRANKLIN	3604	3526	4381	4683	4601	4678	4684	4290	4645	4764	4056	4143	4276
FULTON	28	41	39	42	49	41	36	43	52	48	75	62	56
GALLIA	16	5	17	18	9	17	12	15	15	19	19	18	24
GEAUGA	104	106	113	131	128	139	121	152	135	161	148	144	137
GREENE	290	274	306	320	282	314	311	322	306	379	321	411	390
GUERNSEY	23	42	58	46	27	49	46	61	44	59	66	56	77
HAMILTON	2728	3125	2990	3112	2999	3172	3046	3374	3559	3578	3593	3701	3814
HANCOCK	90	105	86	125	129	120	115	121	109	118	126	134	133
HARDIN	32	23	29	28	32	47	35	28	36	29	40	51	36
HARRISON	10	7	14	6	9	6	9	13	10	15	12	18	20
HENRY	32	27	24	42	31	34	28	29	23	32	42	30	28
HIGHLAND	45	38	51	44	41	50	53	49	44	46	60	67	68
HOCKING	18	28	33	33	44	26	26	29	25	34	30	27	44
HOLMES	25	9	19	15	22	18	19	21	22	20	12	23	13
HURON	81	60	79	94	77	79	77	101	123	118	102	115	135
JACKSON	24	13	30	27	35	28	34	26	35	27	32	30	35
JEFFERSON	15	13	15	26	38	17	25	23	30	23	24	22	21
KNOX	54	45	72	77	55	66	64	67	65	65	54	70	64
LAKE	479	516	525	544	596	571	592	598	654	563	624	594	616
LAWRENCE	11	15	8	16	20	15	32	21	18	10	18	27	20



TABLE 4

## RESIDENT INDUCED ABORTIONS REPORTED IN OHIO, BY COUNTY AND AGE, 2009

Residence	Total	Age Group												Unk.
		<15	15	16	17	18	19	20-24	25-29	30-34	35-39	40-44	45+	
OHIO TOTAL	26959	174	308	497	741	1312	1615	9146	6146	3767	2234	671	45	303
ADAMS	20	0	0	1	1	0	1	5	3	4	1	3	0	1
ALLEN	173	1	5	1	7	8	14	49	38	26	17	5	0	2
ASHLAND	53	1	0	0	1	4	5	24	6	10	1	0	0	1
ASHTABULA	200	4	5	4	9	7	12	61	41	28	18	6	2	3
ATHENS	112	1	3	0	0	6	12	54	20	12	3	0	0	1
AUGLAIZE	28	0	0	0	0	0	2	8	11	3	2	0	1	1
BELMONT	13	0	0	0	0	0	2	4	4	2	1	0	0	0
BROWN	36	0	0	2	1	5	2	5	5	12	3	1	0	0
BUTLER	707	3	6	5	14	42	49	250	152	94	63	21	2	6
CARROLL	34	0	0	2	1	3	2	16	4	4	2	0	0	0
CHAMPAIGN	45	0	0	1	1	2	2	23	6	4	3	2	0	1
CLARK	198	0	2	2	9	7	9	80	44	20	17	4	0	4
CLERMONT	293	1	2	0	5	15	23	101	67	35	31	10	0	3
CLINTON	63	0	2	0	1	3	6	24	14	9	2	2	0	0
COLUMBIANA	124	1	2	2	1	4	9	45	28	17	10	5	0	0
COSHOCTON	31	0	0	1	1	3	1	10	8	4	2	1	0	0
CRAWFORD	46	0	1	1	3	6	3	21	7	2	1	1	0	0
CUYAHOGA	6794	41	88	145	212	299	393	2213	1604	951	599	170	14	65
DARKE	28	2	0	0	0	1	2	5	7	5	4	2	0	0
DEFIANCE	38	1	0	1	0	1	0	14	13	7	1	0	0	0
DELAWARE	140	0	1	2	3	8	8	47	34	20	12	4	0	1
ERIE	157	4	0	4	7	7	9	50	32	28	11	4	1	0
FAIRFIELD	157	1	3	3	2	17	13	54	25	18	11	6	0	4
FAYETTE	32	0	0	1	3	0	2	11	10	2	2	1	0	0
FRANKLIN	3604	15	37	49	72	153	214	1285	874	495	282	78	3	47
FULTON	28	0	0	1	2	2	3	5	4	6	4	0	0	1
GALLIA	16	0	1	0	0	1	3	4	5	1	1	0	0	0
GEAUGA	104	0	0	0	4	3	5	33	19	19	11	8	0	2
GREENE	290	2	5	5	10	21	14	105	62	32	26	3	1	4
GUERNSEY	23	0	0	0	0	4	1	10	4	2	2	0	0	0
HAMILTON	2728	21	21	42	56	101	159	949	690	403	206	54	3	23
HANCOCK	90	0	0	2	4	6	8	33	13	9	11	3	0	1
HARDIN	32	0	0	3	0	5	4	7	3	2	5	1	2	0
HARRISON	10	0	0	2	0	1	0	5	1	1	0	0	0	0
HENRY	32	0	1	0	0	1	2	16	9	2	1	0	0	0
HIGHLAND	45	0	1	0	1	1	5	15	7	10	3	1	0	1
HOCKING	18	0	0	0	2	2	0	9	1	1	1	2	0	0
HOLMES	25	0	1	0	1	0	3	13	3	2	0	2	0	0
HURON	81	0	2	2	2	4	2	28	21	15	4	1	0	0
JACKSON	24	0	1	0	2	1	3	7	3	3	3	1	0	0
JEFFERSON	15	0	1	1	2	3	0	3	2	2	1	0	0	0
KNOX	54	0	0	5	5	3	4	16	7	10	1	3	0	0
LAKE	479	3	2	12	11	20	35	155	103	72	50	12	0	4

TABLE 4. RESIDENCE INDUCED ABORTIONS, 2009 (PAGE 2)

Residence	Total	Age Group												Unk.
		<15	15	16	17	18	19	20-24	25-29	30-34	35-39	40-44	45+	
LAWRENCE	11	0	0	0	1	3	2	1	2	2	0	0	0	0
LICKING	201	1	4	5	13	10	15	65	44	22	17	4	0	1
LOGAN	51	0	1	0	0	5	6	17	18	3	0	1	0	0
LORAIN	679	5	10	17	14	37	45	207	140	108	68	22	1	5
LUCAS	1565	20	20	39	47	77	95	549	332	221	109	23	2	31
MADISON	46	0	4	0	2	3	6	17	6	3	3	0	1	1
MAHONING	572	7	6	7	16	37	32	200	124	84	33	19	1	6
MARION	68	2	3	3	5	4	3	27	9	7	5	0	0	0
MEDINA	293	0	1	5	7	19	15	96	61	37	38	10	0	4
MEIGS	5	0	0	1	0	2	0	0	0	1	0	1	0	0
MERCER	24	0	0	0	1	3	2	8	6	2	1	1	0	0
MIAMI	113	0	1	3	3	4	10	42	23	14	9	1	0	3
MONROE	41	0	0	0	1	1	1	16	8	4	6	3	0	1
MONTGOMERY	1394	7	14	36	29	68	82	442	333	194	121	38	5	25
MORGAN	10	0	0	1	1	0	3	1	0	4	0	0	0	0
MORROW	27	0	0	1	5	0	3	7	4	5	2	0	0	0
MUSKINGUM	102	1	2	4	3	7	6	31	21	18	6	1	0	2
NOBLE	6	0	0	0	0	0	1	4	0	1	0	0	0	0
OTTAWA	32	0	0	0	0	3	1	10	7	3	7	1	0	0
PAULDING	8	0	1	0	1	1	1	3	0	0	1	0	0	0
PERRY	21	0	1	0	1	2	0	7	4	4	1	1	0	0
PICKAWAY	67	3	0	1	2	2	5	18	18	8	6	4	0	0
PIKE	15	0	0	0	0	1	2	2	5	4	0	1	0	0
PORTAGE	367	3	5	9	8	21	23	151	68	41	27	4	0	7
PREBLE	32	0	1	0	0	3	1	15	6	4	1	0	0	1
PUTNAM	27	0	0	0	0	2	3	7	7	4	3	0	0	1
RICHLAND	170	1	0	2	8	7	14	45	40	27	17	6	0	3
ROSS	79	2	3	1	4	1	1	23	22	6	11	3	0	2
SANDUSKY	110	2	0	7	6	5	7	36	23	15	5	4	0	0
SCIOTO	61	0	1	1	2	4	3	18	16	7	7	2	0	0
SENECA	73	0	0	1	2	5	3	25	15	10	8	3	0	1
SHELBY	45	0	1	1	4	7	3	17	8	2	1	1	0	0
STARK	771	4	8	15	24	38	40	265	151	115	74	31	2	4
SUMMIT	1469	10	13	22	44	89	66	497	340	213	113	38	3	21
TRUMBULL	382	3	6	6	11	14	26	146	84	47	28	8	1	2
TUSCARAWAS	97	1	0	0	1	2	4	34	28	15	7	5	0	0
UNION	49	0	2	0	1	4	3	9	15	5	6	3	0	1
VAN WERT	0	0	0	0	0	0	0	0	0	0	0	0	0	0
VINTON	12	0	0	0	2	2	1	2	3	1	1	0	0	0
WARREN	244	0	1	3	3	22	14	64	44	53	30	9	0	1
WASHINGTON	23	0	0	0	1	0	1	7	9	4	1	0	0	0
WAYNE	125	0	0	1	5	4	8	47	29	16	11	3	0	1
WILLIAMS	31	0	0	1	1	2	4	4	10	6	2	0	0	1
WOOD	203	0	6	2	5	11	8	84	43	21	19	3	0	1
WYANDOT	18	0	0	0	1	0	0	8	6	2	0	0	0	1

TABLE 5a

RESIDENT INDUCED ABORTIONS REPORTED IN OHIO, BY SELECTED  
COUNTIES, RACE AND BROAD AGE GROUPS, 2009

Residence/Race	Total	Age Group					Unk
		10-19	20-29	30-39	40-49	50 +	
OHIO	26959	4647	15292	6001	713	3	303
White	14290	2379	8106	3181	461	2	161
Black	10421	1917	5984	2235	168	0	117
Oth/Unk	2248	351	1202	585	84	1	25
ALLEN	173	36	87	43	5	0	2
White	102	19	49	30	3	0	1
Black	59	13	33	11	1	0	1
Oth/Unk	12	4	5	2	1	0	0
ASHTABULA	200	41	102	46	8	0	3
White	177	36	91	42	5	0	3
Black	11	3	4	2	2	0	0
Oth/Unk	12	2	7	2	1	0	0
ATHENS	112	22	74	15	0	0	1
White	86	16	57	12	0	0	1
Black	8	1	6	1	0	0	0
Oth/Unk	18	5	11	2	0	0	0
BUTLER	707	119	402	157	23	0	6
White	474	88	272	96	15	0	3
Black	160	22	94	39	3	0	2
Oth/Unk	73	9	36	22	5	0	1
CLARK	198	29	124	37	4	0	4
White	154	21	97	29	3	0	4
Black	36	8	21	6	1	0	0
Oth/Unk	8	0	6	2	0	0	0
CLERMONT	293	46	168	66	10	0	3
White	274	42	159	61	9	0	3
Black	4	1	3	0	0	0	0
Oth/Unk	15	3	6	5	1	0	0
COLUMBIANA	124	19	73	27	5	0	0
White	120	19	71	25	5	0	0
Black	3	0	2	1	0	0	0
Oth/Unk	1	0	0	1	0	0	0
CUYAHOGA	6794	1178	3817	1550	183	1	65
White	1934	285	1091	456	81	1	20
Black	4189	788	2348	932	79	0	42
Oth/Unk	671	105	378	162	23	0	3
DELAWARE	140	22	81	32	4	0	1
White	113	20	68	22	2	0	1
Black	14	1	9	4	0	0	0
Oth/Unk	13	1	4	6	2	0	0

TABLE 5a. RESIDENT INDUCED ABORTIONS, 2009 (PAGE 2)

Residence/Race	Total	Age Group					Unk
		10-19	20-29	30-39	40-49	50 +	
ERIE	157	31	82	39	4	1	0
White	101	15	54	28	3	1	0
Black	38	9	20	9	0	0	0
Oth/Unk	18	7	8	2	1	0	0
FAIRFIELD	157	39	79	29	6	0	4
White	133	33	70	20	6	0	4
Black	18	4	6	8	0	0	0
Oth/Unk	6	2	3	1	0	0	0
FRANKLIN	3604	540	2159	777	81	0	47
White	1735	229	1075	365	42	0	24
Black	1528	262	906	324	24	0	12
Oth/Unk	341	49	178	88	15	0	11
GREENE	290	57	167	58	4	0	4
White	167	25	97	39	4	0	2
Black	98	27	57	12	0	0	2
Oth/Unk	25	5	13	7	0	0	0
HAMILTON	2728	400	1639	609	57	0	23
White	1003	150	615	213	22	0	3
Black	1530	230	923	334	26	0	17
Oth/Unk	195	20	101	62	9	0	3
HANCOCK	90	20	46	20	3	0	1
White	78	17	39	18	3	0	1
Black	2	1	1	0	0	0	0
Oth/Unk	10	2	6	2	0	0	0
JEFFERSON	15	7	5	3	0	0	0
White	13	7	3	3	0	0	0
Black	2	0	2	0	0	0	0
Oth/Unk	0	0	0	0	0	0	0
KNOX	54	17	23	11	3	0	0
White	53	17	23	10	3	0	0
Oth/Unk	1	0	0	1	0	0	0
LAKE	479	83	258	122	12	0	4
White	374	68	202	91	9	0	4
Black	58	9	34	14	1	0	0
Oth/Unk	47	6	22	17	2	0	0
LICKING	201	48	109	39	4	0	1
White	176	38	99	34	4	0	1
Black	14	4	6	4	0	0	0
Oth/Unk	11	6	4	1	0	0	0
LORAIN	679	128	347	176	23	0	5
White	463	82	244	116	16	0	5
Black	130	21	67	39	3	0	0
Oth/Unk	86	25	36	21	4	0	0

TABLE 5a. RESIDENT INDUCED ABORTIONS, 2009 (PAGE 3)

Residence/Race	Total	Age Group					Unk
		10-19	20-29	30-39	40-49	50 +	
LUCAS	1565	298	881	330	24	1	31
White	763	139	421	169	19	0	15
Black	626	128	362	122	3	0	11
Oth/Unk	176	31	98	39	2	1	5
MAHONING	572	105	324	117	20	0	6
White	309	64	158	68	18	0	1
Black	235	41	147	42	0	0	5
Oth/Unk	28	0	19	7	2	0	0
MARION	68	20	36	12	0	0	0
White	55	15	31	9	0	0	0
Black	10	5	3	2	0	0	0
Oth/Unk	3	0	2	1	0	0	0
MEDINA	293	47	157	75	10	0	4
White	264	39	143	68	10	0	4
Black	13	4	4	5	0	0	0
Oth/Unk	16	4	10	2	0	0	0
MIAMI	113	21	65	23	1	0	3
White	102	21	57	20	1	0	3
Black	5	0	4	1	0	0	0
Oth/Unk	6	0	4	2	0	0	0
MONTGOMERY	1394	236	775	315	43	0	25
White	652	96	355	167	26	0	8
Black	660	131	368	133	13	0	15
Oth/Unk	82	9	52	15	4	0	2
PORTAGE	367	69	219	68	4	0	7
White	288	53	172	53	4	0	6
Black	57	11	37	8	0	0	1
Oth/Unk	22	5	10	7	0	0	0
RICHLAND	170	32	85	44	6	0	3
White	130	27	61	33	6	0	3
Black	32	4	19	9	0	0	0
Oth/Unk	8	1	5	2	0	0	0
SANDUSKY	110	27	59	20	4	0	0
White	88	19	50	16	3	0	0
Black	12	5	5	1	1	0	0
Oth/Unk	10	3	4	3	0	0	0
SCIOTO	61	11	34	14	2	0	0
White	55	10	30	13	2	0	0
Black	3	1	2	0	0	0	0
Oth/Unk	3	0	2	1	0	0	0



TABLE 5a. RESIDENT INDUCED ABORTIONS, 2009 (PAGE 4)

Residence/Race	Total	Age Group					Unk
		10-19	20-29	30-39	40-49	50 +	
SENECA	73	11	40	18	3	0	1
White	62	7	34	17	3	0	1
Black	2	1	1	0	0	0	0
Oth/Unk	9	3	5	1	0	0	0
STARK	771	129	416	189	33	0	4
White	587	91	320	144	29	0	3
Black	132	29	71	29	2	0	1
Oth/Unk	52	9	25	16	2	0	0
SUMMIT	1469	244	837	326	41	0	21
White	817	123	474	177	29	0	14
Black	546	108	310	113	8	0	7
Oth/Unk	106	13	53	36	4	0	0
TRUMBULL	382	66	230	75	9	0	2
White	278	40	176	54	6	0	2
Black	84	24	42	17	1	0	0
Oth/Unk	20	2	12	4	2	0	0
WARREN	244	43	108	83	9	0	1
White	202	40	87	66	9	0	0
Black	9	1	6	1	0	0	1
Oth/Unk	33	2	15	16	0	0	0
WAYNE	125	18	76	27	3	0	1
White	111	16	68	24	2	0	1
Black	9	2	7	0	0	0	0
Oth/Unk	5	0	1	3	1	0	0
WOOD	203	32	127	40	3	0	1
White	162	29	98	31	3	0	1
Black	15	1	14	0	0	0	0
Oth/Unk	26	2	15	9	0	0	0

TABLE 5b

## RESIDENT INDUCED ABORTIONS REPORTED IN OHIO, BY SELECTED COUNTIES, RACE AND AGE, 2009

County/Race	Total	Age Group															
		<15	15	16	17	18	19	15-19	20	21	20-24	25-29	30-34	35-39	40-44	45+	Unk.
OHIO	26959	174	308	497	741	1312	1615	4473	1824	1901	9146	6146	3767	2234	671	45	303
White	14290	74	133	221	389	720	842	2305	991	1021	4908	3198	1948	1233	438	25	161
Black	10421	85	148	231	303	495	655	1832	703	727	3533	2451	1448	787	158	10	117
Oth/Unk	2248	15	27	45	49	97	118	336	130	153	705	497	371	214	75	10	25
BUTLER	707	3	6	5	14	42	49	116	48	47	250	152	94	63	21	2	6
White	474	3	3	5	11	32	34	85	34	33	163	109	60	36	13	2	3
Black	160	0	2	0	2	7	11	22	11	7	61	33	20	19	3	0	2
Oth/Unk	73	0	1	0	1	3	4	9	3	7	26	10	14	8	5	0	1
CUYAHOGA	6794	41	88	145	212	299	393	1137	428	442	2213	1604	951	599	170	14	65
White	1934	8	13	34	48	82	100	277	113	126	629	462	262	194	76	6	20
Black	4189	30	66	102	147	188	255	758	272	274	1362	986	588	344	73	6	42
Oth/Unk	671	3	9	9	17	29	38	102	43	42	222	156	101	61	21	2	3
FRANKLIN	3604	15	37	49	72	153	214	525	254	267	1285	874	495	282	78	3	47
White	1735	3	11	16	31	68	100	226	122	146	661	414	231	134	41	1	24
Black	1528	8	23	28	36	71	96	254	112	98	523	383	213	111	24	0	12
Oth/Unk	341	4	3	5	5	14	18	45	20	23	101	77	51	37	13	2	11
GREENE	290	2	5	5	10	21	14	55	21	14	105	62	32	26	3	1	4
White	167	1	2	1	6	8	7	24	12	7	61	36	21	18	3	1	2
Black	98	1	2	4	3	12	5	26	8	7	39	18	6	6	0	0	2
Oth/Unk	25	0	1	0	1	1	2	5	1	0	5	8	5	2	0	0	0
HAMILTON	2728	21	21	42	56	101	159	379	186	205	949	690	403	206	54	3	23
White	1003	9	6	16	28	41	50	141	74	78	374	241	140	73	20	2	3
Black	1530	12	14	23	24	58	99	218	102	114	525	398	221	113	26	0	17
Oth/Unk	195	0	1	3	4	2	10	20	10	13	50	51	42	20	8	1	3
LORAIN	679	5	10	17	14	37	45	123	42	45	207	140	108	68	22	1	5
White	463	5	4	8	10	23	32	77	34	32	139	105	70	46	15	1	5
Black	130	0	2	3	1	9	6	21	6	7	43	24	24	15	3	0	0
Oth/Unk	86	0	4	6	3	5	7	25	2	6	25	11	14	7	4	0	0

TABLE 5b. RESIDENT INDUCED ABORTIONS, 2009 (PAGE 2)

County/Race	Total	Age Group															
		<15	15	16	17	18	19	15-19	20	21	20-24	25-29	30-34	35-39	40-44	45+	Unk.
LUCAS	1565	20	20	39	47	77	95	278	103	121	549	332	221	109	23	2	31
White	763	9	12	20	22	36	40	130	49	54	250	171	110	59	18	1	15
Black	626	8	3	17	23	33	44	120	44	53	235	127	82	40	3	0	11
Oth/Unk	176	3	5	2	2	8	11	28	10	14	64	34	29	10	2	1	5
MONTGOMERY	1394	7	14	36	29	68	82	229	88	92	442	333	194	121	38	5	25
White	652	2	3	12	13	32	34	94	40	32	202	153	100	67	25	1	8
Black	660	5	10	23	16	32	45	126	42	58	218	150	87	46	11	2	15
Oth/Unk	82	0	1	1	0	4	3	9	6	2	22	30	7	8	2	2	2
SUMMIT	1469	10	13	22	44	89	66	234	106	113	497	340	213	113	38	3	21
White	817	3	7	7	26	45	35	120	62	66	286	188	117	60	27	2	14
Black	546	5	6	12	17	41	27	103	37	43	179	131	69	44	7	1	7
Oth/Unk	106	2	0	3	1	3	4	11	7	4	32	21	27	9	4	0	0



TABLE 7

## INDUCED ABORTIONS REPORTED IN OHIO, BY METHOD OF TERMINATION AND COUNTY OF OCCURRENCE, 2009

County of Occurrence	Method of Termination										
	TOTAL	Curretage	D & Ext	D & Evac	Saline Instill	Prostag Instill	Hyster- otomy	Hyster- ectomy	Other	Non Surgical	Not Reported
OHIO	28721	19964	269	2661	100	54	1	5	754	5812	702
CUYAHOGA	10317	6922	35	1345	42	18	0	4	681	2170	483
FRANKLIN	5581	4000	8	226	17	7	0	0	0	1337	31
GREENE	432	8	0	0	2	0	0	0	0	425	0
HAMILTON	4825	4174	59	427	6	12	1	0	2	226	10
LUCAS	2548	1854	42	206	10	3	0	0	1	413	43
MAHONING	572	548	0	0	1	0	0	0	0	24	0
MONTGOMERY	2088	1612	11	343	6	9	0	1	1	116	3
SUMMIT	2358	846	114	114	16	5	0	0	69	1101	132

Does not add due to reporting of combination procedures.

TABLE 8

TOTAL INDUCED ABORTIONS REPORTED IN OHIO, BY  
GESTATIONAL AGE, 2009

Gestational Age	Number	Percent
Total Abortions Reported	28721	100.0
Less than 9 Weeks	16264	56.6
9 - 12 Weeks	7971	27.8
13 - 19 Weeks	3597	12.5
20 Weeks	133	0.5
21 - 24	456	1.6
25 - 36 Weeks	24	0.1
Unknown	276	1.0

TABLE 9

RESIDENT INDUCED ABORTIONS IN OHIO, BY AGE OF WOMEN OBTAINING ABORTION  
AND BY NUMBER OF PRIOR INDUCED ABORTIONS, 2009

Age Group	Total	Prior Induced Abortion						Unk
		0	1	2	3	4	5+	
Total Abortions	26959	13033	6873	3032	1125	464	392	2040
Under 15	174	147	6	3	0	1	0	17
15-19	4473	3224	620	88	21	2	4	514
20-24	9146	4799	2396	893	231	77	54	696
25-29	6146	2378	1815	925	373	170	118	367
30-34	3767	1284	1049	660	295	125	122	232
35-39	2234	772	695	340	154	68	79	126
40-44	671	264	199	97	35	18	11	47
45-59	45	22	11	3	1	0	1	7
Unknown	303	143	82	23	15	3	3	34

TABLE 10a

TOTAL INDUCED ABORTIONS IN OHIO WITH POST-ABORTION COMPLICATIONS, BY  
TYPE OF COMPLICATION, 2009

(DATA SOURCE IS 'CONFIDENTIAL ABORTION REPORTING FORM')

Complication Type	Number of Complications	Percent of Abortions with Complications
Perforation of Uterus	1	1.12%
Cervical Laceration	12	17.65%
Hemorrhage	58	65.17%
Incomplete Abortion	1	1.12%
Hematometra	4	4.49%
Anesthetic	1	1.12%
Failed Abortion	1	1.12%
Infection	2	2.25%
Death	1	1.12%
Other	10	11.24%
Total Number of Complications*	91	Not Applicable
Total Abortions with One or More Complications	89	100.0%



TABLE 10b

TOTAL INDUCED ABORTIONS IN OHIO WITH POST-ABORTION COMPLICATIONS, BY  
TYPE OF COMPLICATION, 2009

(DATA SOURCE IS 'POST-ABORTION CARE REPORT FOR COMPLICATIONS')

Complication Type	Number of Complications	Percent of Abortions with Complications
Perforation of Uterus	7	10.29%
Cervical Laceration	3	4.41%
Hemorrhage	8	11.76%
Incomplete Abortion	23	33.82%
Hematometra	22	32.35%
Anesthetic	1	1.47%
Failed Abortion	8	11.76%
Infection	5	7.35%
Death	0	0.00%
Other	6	10.29%
Total Number of Complications*	83	Not Applicable
Total Abortions with One or More Complications	68	100.0%

TABLE 11

TOTAL INDUCED ABORTIONS IN OHIO WITH POST-ABORTION COMPLICATIONS, BY  
TYPE OF COMPLICATION AND GESTATION PERIOD, 2009

(DATA SOURCE IS POST-ABORTION CARE REPORT FOR COMPLICATIONS')

Complication Type	Total	Gestation Period				Unk
		< 9 Wks	9-12 Wks	13-19 Wks	20+ Wks	
(Number of Complications)						
Perforation of Uterus	7	0	1	6	0	0
Cervical Laceration	3	0	0	2	1	0
Hemorrhage	8	4	0	1	2	1
Incomplete Abortion	23	12	5	3	1	2
Hematometra	22	8	11	1	0	2
Anesthetic	1	0	0	0	1	0
Failed Abortion	8	6	0	2	0	0
Infection	5	1	1	1	2	0
Death	0	0	0	0	0	0
Other/Unreported	6	3	2	0	1	0
Total Number of Complications*	83	34	20	16	8	5
Total Abortions with One or More Complications	68	31	21	8	4	4

NOTE: An abortion may have more than one reported complication. Complications reported in this table may or may not also be reported in Table 10b.

TABLE 12

## RESIDENT INDUCED ABORTIONS BY ZIP CODE OF PATIENT, OHIO, 2009

Zip Code	Total	Zip Code	Total	Zip Code	Total	Zip Code	Total
43001	5	43103	21	43219	142	43417	1
43002	1	43105	7	43220	46	43420	67
43003	2	43106	3	43221	44	43430	4
43004	52	43107	5	43222	19	43431	8
43005	1	43110	105	43223	75	43432	1
43006	1	43111	1	43224	135	43435	1
43007	1	43112	5	43225	1	43440	1
43008	5	43113	27	43227	88	43442	1
43009	1	43115	2	43228	175	43443	2
43011	8	43116	3	43229	209	43445	1
43013	3	43119	64	43230	113	43447	5
43014	4	43123	89	43231	75	43449	7
43015	68	43125	18	43232	224	43450	4
43016	66	43128	4	43234	2	43452	14
43017	63	43130	59	43235	81	43454	1
43018	1	43135	2	43236	1	43460	10
43019	12	43136	2	43238	2	43462	1
43021	8	43137	3	43240	6	43464	1
43022	2	43138	12	43244	1	43465	6
43023	12	43140	29	43255	1	43466	3
43025	7	43142	1	43260	1	43469	4
43026	80	43143	3	43302	54	43470	1
43028	5	43144	1	43311	27	43500	1
43031	11	43146	12	43315	9	43502	3
43035	34	43147	53	43316	9	43504	1
43037	1	43149	1	43318	4	43506	9
43040	39	43150	3	43319	1	43509	1
43044	7	43151	1	43324	3	43510	1
43045	3	43153	1	43326	18	43512	32
43046	4	43154	2	43331	2	43515	9
43050	30	43157	1	43332	6	43516	4
43054	33	43160	22	43333	1	43517	5
43055	81	43162	7	43334	8	43518	1
43056	19	43164	4	43337	1	43521	1
43060	3	43165	1	43338	6	43522	4
43061	3	43167	1	43340	1	43523	1
43062	41	43188	1	43342	2	43524	2
43064	6	43201	139	43343	1	43525	2
43065	26	43202	64	43344	3	43526	4
43068	171	43203	60	43348	3	43527	1
43071	3	43204	108	43351	10	43528	27
43072	6	43205	57	43356	1	43532	3
43073	1	43206	127	43357	5	43533	1
43074	4	43207	142	43358	3	43534	1
43076	8	43208	1	43360	1	43536	1
43078	28	43209	79	43400	1	43537	44
43080	6	43210	17	43402	69	43538	1
43081	101	43211	105	43403	11	43540	2
43082	24	43212	58	43406	2	43542	2
43085	34	43213	140	43408	2	43543	11
43086	1	43214	66	43410	12	43545	19
43087	1	43215	47	43412	5	43551	46
43096	1	43216	4	43413	1	43552	2
43102	1	43217	8	43416	4	43554	1

TABLE 12. RESIDENT ABORTIONS, 2009 (PAGE 2)

Zip Code	Total	Zip Code	Total	Zip Code	Total	Zip Code	Total
43557	5	43748	2	44012	57	44082	1
43558	16	43749	2	44013	1	44084	8
43560	41	43754	1	44014	1	44085	7
43564	1	43756	5	44016	2	44086	1
43565	1	43758	3	44017	42	44087	57
43566	6	43760	2	44021	8	44089	32
43567	8	43762	7	44022	18	44090	19
43569	4	43764	2	44023	21	44091	1
43570	3	43771	1	44024	30	44092	48
43571	11	43777	5	44025	1	44093	4
43577	1	43778	2	44026	16	44094	81
43578	1	43780	1	44028	9	44095	64
43585	1	43782	1	44029	1	44096	5
43587	1	43783	1	44030	24	44098	1
43602	1	43791	1	44032	1	44099	2
43604	91	43793	2	44034	1	44100	2
43605	131	43805	1	44035	182	44101	6
43606	87	43806	1	44036	2	44102	262
43607	131	43812	19	44037	1	44103	155
43608	90	43821	5	44039	53	44104	362
43609	108	43822	3	44040	4	44105	414
43610	28	43824	2	44041	25	44106	189
43611	57	43830	7	44042	1	44107	243
43612	135	43832	2	44043	1	44108	300
43613	116	43837	6	44044	24	44109	191
43614	106	43840	4	44046	3	44110	230
43615	166	43843	1	44047	22	44111	156
43616	40	43844	3	44048	6	44112	221
43617	6	43845	6	44049	1	44113	88
43618	2	43903	2	44050	12	44114	28
43619	17	43906	3	44051	1	44115	105
43620	30	43907	4	44052	107	44116	32
43623	40	43908	1	44053	39	44117	57
43624	1	43912	1	44054	32	44118	213
43635	1	43919	2	44055	62	44119	81
43636	1	43920	20	44056	31	44120	344
43670	1	43930	2	44057	25	44121	219
43685	1	43932	1	44058	1	44122	143
43701	70	43935	2	44059	1	44123	137
43707	1	43938	2	44060	110	44124	108
43713	6	43945	1	44061	1	44125	163
43716	1	43950	1	44062	6	44126	29
43717	3	43952	1	44063	1	44127	51
43720	1	43953	2	44064	1	44128	323
43723	5	43964	1	44065	8	44129	81
43724	3	43968	2	44067	62	44130	149
43725	16	43986	1	44070	87	44131	30
43728	1	43988	2	44071	1	44132	105
43729	1	44001	32	44072	8	44133	65
43730	2	44003	4	44074	22	44134	96
43731	2	44004	96	44075	1	44135	136
43732	2	44008	1	44076	7	44136	39
43734	3	44009	2	44077	140	44137	211
43739	1	44010	2	44080	3	44138	37
43746	2	44011	32	44081	16	44139	54

TABLE 12. RESIDENT ABORTIONS, 2009 (PAGE 3)

Zip Code	Total	Zip Code	Total	Zip Code	Total	Zip Code	Total
44140	20	44253	4	44402	6	44503	1
44141	14	44254	8	44403	7	44504	18
44142	51	44255	6	44404	2	44505	59
44143	103	44256	111	44405	14	44506	14
44144	90	44260	24	44406	23	44507	35
44145	48	44261	1	44407	1	44509	59
44146	211	44262	4	44408	21	44510	9
44147	39	44264	5	44410	20	44511	52
44149	26	44265	1	44411	1	44512	84
44152	2	44266	75	44412	8	44513	2
44155	1	44268	1	44413	10	44514	31
44158	1	44270	7	44415	1	44515	66
44166	1	44272	4	44417	1	44526	2
44168	1	44273	5	44418	1	44564	1
44170	1	44275	4	44420	30	44569	1
44178	2	44278	28	44423	3	44601	62
44184	1	44280	11	44425	22	44603	1
44187	1	44281	50	44427	3	44606	5
44189	1	44283	1	44428	4	44607	1
44191	1	44286	8	44429	8	44608	4
44194	2	44287	8	44430	4	44609	11
44199	1	44288	10	44431	6	44610	1
44201	8	44300	1	44432	12	44611	4
44202	26	44301	60	44433	1	44612	5
44203	82	44302	21	44436	4	44613	7
44204	1	44303	20	44437	4	44614	28
44207	1	44304	21	44438	5	44615	6
44208	1	44305	85	44440	9	44618	2
44209	3	44306	117	44442	2	44620	2
44210	2	44307	55	44443	3	44622	27
44211	2	44308	4	44444	10	44624	2
44212	91	44309	6	44445	1	44625	3
44214	3	44310	80	44446	58	44626	4
44215	5	44311	44	44449	1	44629	1
44216	12	44312	63	44450	3	44632	15
44217	3	44313	78	44451	1	44633	1
44220	2	44314	53	44452	4	44636	1
44221	69	44315	2	44453	1	44637	3
44223	26	44316	1	44454	2	44638	2
44224	75	44318	1	44455	3	44641	31
44226	1	44319	36	44460	26	44643	8
44227	1	44320	121	44463	1	44644	7
44230	8	44321	31	44470	5	44645	3
44231	10	44326	2	44471	25	44646	98
44233	12	44330	1	44472	2	44647	36
44234	6	44332	1	44473	8	44654	9
44235	2	44333	23	44480	1	44656	7
44236	18	44334	1	44481	11	44657	14
44240	150	44339	1	44483	58	44659	1
44241	44	44340	1	44484	37	44660	3
44242	5	44348	1	44485	74	44661	1
44243	3	44362	1	44487	1	44662	13
44244	1	44382	1	44490	3	44663	34
44246	4	44388	1	44491	4	44666	2
44250	7	44401	2	44502	46	44667	17

TABLE 12. RESIDENT ABORTIONS, 2009 (PAGE 4)

Zip Code	Total	Zip Code	Total	Zip Code	Total	Zip Code	Total
44669	6	44839	19	45036	36	45169	8
44672	10	44840	4	45039	31	45171	5
44676	7	44841	1	45040	80	45174	1
44677	1	44842	4	45042	53	45176	11
44680	2	44843	4	45044	102	45177	29
44681	3	44844	2	45050	14	45202	72
44683	10	44846	4	45051	1	45203	21
44685	40	44847	9	45052	6	45204	21
44688	6	44849	1	45053	1	45205	70
44691	50	44851	6	45054	2	45206	57
44694	1	44853	1	45055	2	45207	49
44695	1	44854	3	45056	37	45208	25
44699	2	44855	1	45059	1	45209	41
44700	1	44856	1	45062	1	45211	182
44701	2	44857	36	45064	5	45212	70
44702	3	44859	5	45065	6	45213	47
44703	26	44861	1	45066	27	45214	49
44704	11	44864	3	45067	21	45215	97
44705	80	44865	1	45068	10	45216	29
44706	42	44866	1	45069	96	45217	23
44707	35	44867	3	45081	1	45218	12
44708	37	44870	102	45096	1	45219	79
44709	36	44875	14	45101	3	45220	57
44710	30	44877	1	45102	43	45221	1
44714	17	44878	1	45103	50	45222	1
44715	1	44880	4	45106	10	45223	72
44718	24	44881	1	45107	18	45224	78
44720	59	44883	30	45111	1	45225	62
44721	16	44889	4	45113	5	45226	11
44730	3	44890	16	45118	3	45227	68
44733	1	44901	1	45119	1	45229	78
44760	1	44902	9	45120	5	45230	58
44764	1	44903	44	45121	7	45231	140
44787	1	44904	23	45122	17	45232	70
44790	2	44905	12	45123	10	45233	17
44796	2	44906	27	45126	1	45234	2
44802	1	44907	20	45130	4	45236	67
44805	34	44939	1	45133	21	45237	97
44807	3	45001	3	45134	1	45238	144
44810	4	45002	14	45135	5	45239	85
44811	15	45003	3	45140	65	45240	144
44813	9	45005	42	45142	3	45241	36
44814	4	45009	1	45144	3	45242	27
44815	7	45011	143	45146	3	45243	14
44817	1	45013	97	45148	1	45244	43
44818	2	45014	124	45150	73	45245	32
44820	20	45015	21	45151	1	45246	55
44822	1	45017	1	45152	5	45247	36
44824	1	45019	2	45154	7	45248	35
44826	3	45022	1	45157	7	45249	28
44827	8	45024	1	45159	2	45251	73
44830	40	45030	26	45160	2	45252	9
44833	13	45031	1	45162	2	45253	1
44836	2	45033	1	45166	1	45255	45
44837	1	45034	2	45167	4	45257	1

TABLE 12. RESIDENT ABORTIONS, 2009 (PAGE 5)

Zip Code	Total	Zip Code	Total	Zip Code	Total	Zip Code	Total
45260	1	45383	5	45529	1	45719	1
45271	1	45384	6	45601	63	45723	3
45281	1	45385	44	45612	2	45724	3
45286	1	45387	8	45613	1	45727	1
45301	1	45388	1	45614	2	45732	4
45302	3	45389	1	45616	1	45735	2
45303	3	45390	1	45619	1	45740	1
45304	6	45400	1	45621	1	45741	1
45305	14	45401	2	45622	1	45744	3
45306	4	45402	49	45623	2	45750	6
45308	2	45403	36	45628	5	45760	1
45309	17	45404	41	45631	7	45761	2
45311	1	45405	92	45633	1	45764	12
45312	4	45406	89	45634	2	45766	1
45314	3	45408	45	45638	7	45769	2
45315	10	45409	16	45640	13	45772	1
45318	5	45410	30	45643	1	45776	1
45319	2	45413	2	45644	3	45778	1
45320	17	45414	67	45645	1	45780	3
45322	49	45415	31	45647	3	45784	2
45323	8	45416	26	45648	10	45786	1
45324	93	45417	53	45651	5	45801	54
45325	1	45418	20	45652	2	45804	30
45326	2	45419	29	45653	1	45805	38
45327	14	45420	47	45654	1	45806	12
45328	2	45424	106	45655	1	45807	9
45329	2	45425	1	45656	3	45810	7
45331	13	45426	85	45657	1	45812	1
45332	1	45427	39	45660	7	45815	1
45333	2	45428	1	45661	4	45817	5
45334	1	45429	40	45662	27	45821	1
45335	8	45430	9	45663	4	45822	19
45337	2	45431	48	45664	1	45828	4
45338	4	45432	27	45671	2	45830	6
45339	3	45433	5	45672	1	45831	4
45340	3	45434	11	45674	2	45832	1
45341	2	45435	4	45677	1	45833	16
45342	61	45439	29	45679	1	45835	1
45344	31	45440	43	45680	2	45836	2
45345	5	45442	1	45682	3	45840	79
45346	2	45449	51	45683	1	45843	3
45347	4	45454	1	45684	1	45844	4
45356	24	45458	48	45686	1	45845	1
45359	2	45459	45	45690	8	45850	1
45365	35	45475	1	45692	5	45851	1
45368	4	45494	1	45693	6	45856	5
45369	3	45495	1	45694	11	45858	2
45370	3	45496	1	45695	2	45862	1
45371	23	45501	2	45697	5	45865	1
45372	1	45502	20	45701	76	45867	2
45373	38	45503	61	45706	2	45869	1
45377	31	45504	22	45710	3	45871	1
45380	2	45505	38	45711	4	45872	5
45381	8	45506	14	45714	2	45873	2
45382	3	45520	1	45715	3	45875	4

TABLE 12. RESIDENT ABORTIONS, 2009 (PAGE 5)

<b>Zip Code</b>	<b>Total</b>	<b>Zip Code</b>	<b>Total</b>	<b>Zip Code</b>	<b>Total</b>	<b>Zip Code</b>	<b>Total</b>
45876	1	45885	11	45895	10	45944	1
45877	2	45887	4	45896	1	99999	226
45879	4	45889	2	45920	1		
45883	1	45891	5	45942	1		



# Confidential Abortion Report

Ohio Department of Health  
(Required pursuant to O.A.C. 3701-47-03)

1. Facility name:	For State Use Only
2. Address: <span style="float: right;">Zip code: <input style="width: 40px;" type="text"/></span>	

## GENERAL INFORMATION

3. Zip code of address of the woman: <input style="width: 100%;" type="text"/>	Ohio County of Residence (specify):	Non-Ohio State of Residence (specify):
4. Woman's identification number: <input style="width: 100%;" type="text"/>	5. Age of woman: <input style="width: 40px;" type="text"/>	6. Education: Specify highest number of years completed <input style="width: 40px;" type="text"/>
7. Marital status: <input type="checkbox"/> Never married <input type="checkbox"/> Divorced <input type="checkbox"/> Married <input type="checkbox"/> Widowed <input type="checkbox"/> Separated <input type="checkbox"/> Unknown	8A. Race or ethnic group: <input type="checkbox"/> White <input type="checkbox"/> Asian/Pacific Islander <input type="checkbox"/> Black <input type="checkbox"/> Other /Unknown (specify) _____ <input type="checkbox"/> American Indian	8B. Is woman Hispanic? <input type="checkbox"/> Yes <input type="checkbox"/> No

## MEDICAL HISTORY

9. Number of living children: <input style="width: 40px;" type="text"/>	10. Date of last live birth: <input style="width: 40px;" type="text"/> m <input style="width: 40px;" type="text"/> d <input style="width: 40px;" type="text"/> y <input style="width: 40px;" type="text"/>
11. Number of prior abortions: Spontaneous <input style="width: 40px;" type="text"/> Induced <input style="width: 40px;" type="text"/>	12. Date of last Induced abortion: <input style="width: 40px;" type="text"/> m <input style="width: 40px;" type="text"/> d <input style="width: 40px;" type="text"/> y <input style="width: 40px;" type="text"/>
13. Number of previous pregnancies: <input style="width: 40px;" type="text"/>	14. Contraceptive History: Was the woman practicing contraception at the time of conception? <input type="checkbox"/> Yes <input type="checkbox"/> No. <input type="checkbox"/> Unknown
15. Method. If yes to number 14, what was the method used?: <input type="checkbox"/> Pill, Norplant, Depo-Provera <input type="checkbox"/> Surgical <input type="checkbox"/> Condom, Jelly, Cervical Cap, Sponge, Insert <input type="checkbox"/> Other (specify) _____ <input type="checkbox"/> Rhythm, Coitus Interruptus	16. First day of last menstrual period: <input style="width: 40px;" type="text"/> m <input style="width: 40px;" type="text"/> d <input style="width: 40px;" type="text"/> y <input style="width: 40px;" type="text"/>
	17. Rh type of woman: <input type="checkbox"/> Negative <input type="checkbox"/> Positive

## MEDICAL PROCEDURE

18. Date of Termination: <input style="width: 40px;" type="text"/> m <input style="width: 40px;" type="text"/> d <input style="width: 40px;" type="text"/> y <input style="width: 40px;" type="text"/>	19A. Clinical Estimate of Gestation in weeks: <input style="width: 40px;" type="text"/>	19B. If 19A is 14 or greater, were discharge instructions given as per O.A.C. 3701-47-02? <input type="checkbox"/> YES <input type="checkbox"/> NO
20. Method of Termination: <input type="checkbox"/> Suction Curettage <input type="checkbox"/> Sharp Curettage <input type="checkbox"/> Dilation & Extraction <input type="checkbox"/> Dilation & Evacuation <input type="checkbox"/> Saline/Urea Installation <input type="checkbox"/> Prostaglandin Installation <input type="checkbox"/> Hysterotomy <input type="checkbox"/> Hysterectomy <input type="checkbox"/> Other (specify) _____ <input type="checkbox"/> Medical (NonSurgical) Specify Medication(s) _____		
21. Medical condition of the woman at the time of the abortion: <input type="checkbox"/> Good <input type="checkbox"/> Fair <input type="checkbox"/> Other (specify) _____	22. Type of procedure done immediately after the abortion: <input type="checkbox"/> Sterilization <input type="checkbox"/> None <input type="checkbox"/> Other (specify) _____	
23. Post Abortion Complications (Indicate all): <input type="checkbox"/> None <input type="checkbox"/> Hemorrhage <input type="checkbox"/> Perforation of uterus <input type="checkbox"/> Cervical laceration <input type="checkbox"/> Infection <input type="checkbox"/> Anesthetic <input type="checkbox"/> Failed Abortion <input type="checkbox"/> Incomplete Abortio <input type="checkbox"/> Hematometra <input type="checkbox"/> Death <input type="checkbox"/> Other (specify) _____	24. Type of family planning recommended: <input type="checkbox"/> Pill, Norplant, Depo-Provera <input type="checkbox"/> Condom, Jelly, Cervical Cap, Sponge, Insert <input type="checkbox"/> Rhythm, Coitus Interruptus <input type="checkbox"/> Surgical <input type="checkbox"/> Other (specify) _____	
25. Type of Counseling given: <input type="checkbox"/> Psychological <input type="checkbox"/> Social Service <input type="checkbox"/> Pastoral <input type="checkbox"/> Medical <input type="checkbox"/> Other (specify) _____ <input type="checkbox"/> None		
26. Physician's name (Type or print):	M.D. D.O.	Physician's Signature: <span style="float: right;">Date: _____</span>

**Send completed forms to:  
OHIO DEPARTMENT OF HEALTH,  
CONFIDENTIAL REPORTS A,  
P.O. BOX 118, COLUMBUS, OHIO 43216**

# Post Abortion Care Report For Complications

Ohio Department of Health

(Required Pursuant to O.A.C. 3701-47-03)

To be completed by the physician providing post-abortion care

State Use Only

1. Facility where post-abortion care was provided:			
2. Street or Post Number	City	State	Zip

3. Date of Abortion: Month Day Year ___/___/___	4. Weeks of Gestation: _____			
5A. Facility where Abortion was performed:				
5B Address of Facility:	Street or Post Number	City	State	Zip
6. Date Post Abortion Care Began: Month Day Year ___/___/___	7. Patient Number: ___/___/___/___/___/___/___/___/___/___/___/___			
8. Complication(s) (Please check all that apply):				
<input type="checkbox"/> Hemorrhage	<input type="checkbox"/> Anesthetic	<input type="checkbox"/> Hematometra	<input type="checkbox"/> Perforation of Uterus	
<input type="checkbox"/> Failure of Amniotic Fluid Ex	<input type="checkbox"/> RH Incompatibility	<input type="checkbox"/> Cervical Laceration	<input type="checkbox"/> Failed Abortion	
<input type="checkbox"/> Infection	<input type="checkbox"/> Incomplete Abortion	<input type="checkbox"/> Death	<input type="checkbox"/> Other (Specify) _____	
9. Duration of treatment: (Indicate number of hours or days) _____ Hours    _____ Days				

10. Remarks:
_____
_____
_____
_____
_____

11A. Physician's name providing care (Type or print)	11B. Physicians Signature:	M.D. D.O.	Date:
---	----------------------------	--------------	-------

Send Completed Forms to: Ohio Department of Health  
Confidential Reports A  
P O Box 118  
Columbus OH 43216

HEA 1806  
Rev 4/96